



Your Speaker

Dr. Ivan Lendaro, DT, DDS, MDSc.

- Graduated in Dentistry and Dental Prosthetics from the Faculty of Medicine and Surgery, University of Trieste (Italy)
- Diploma in Dental Technician
- Master of Science in Prosthetics, Vienna University of Medicine (Austria)
- Master in Management of Patients with Obstructive Sleep Apnea, University of Padua (Italy)
- Academic Expert in Function and Dysfunction of the Masticatory Organ, Postgraduate University Course, Donau University (Vienna / Austria) under Prof. Dr. Rudolf Slavicek



Prices

Orthodontists / Dentists:	799,- €	Early bird 699,- €
Assistants:	699,- €	599,- €

Prices including catering. All prices plus VAT. You will receive a list of needed instruments with your registration confirmation.

The early bird prices are valid until June 15, 2025.

Venue Hands-on Course

NH Collection Frankfurt Spin Tower
Güterplatz 1
60327 Frankfurt / Main

nh-collection.com/de/hotel/nh-collection-frankfurt-spin-tower

Information & Registration



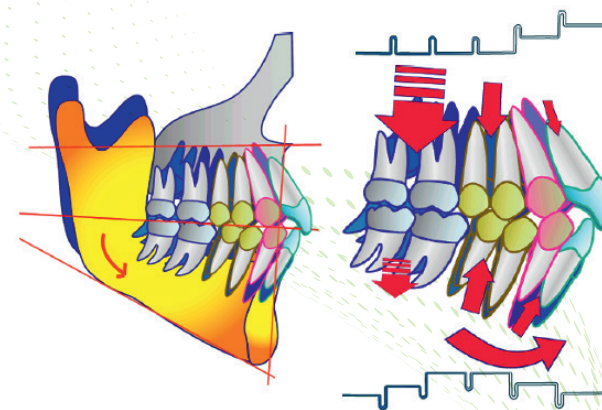
dentalline GmbH & Co. KG
Heike Bischoff
Course management
Goethestraße 47
75217 Birkenfeld, Germany
Phone: +49 (0)7231-9781-22
Fax: +49 (0)7231-9781-35
E-Mail: hb@dentalline.de
dentalline.de



dentalline.de/aktuell/termine

XO-042501

The concept of function-driven orthodontics



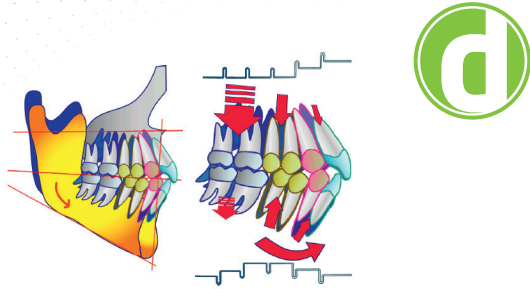
**A gnathological, occlusal
and postural approach
to dentoskeletal malocclusions**

Hands-on Course

17-18 October 2025
Frankfurt / Main (Germany)



dentalline.de



The concept of function-driven orthodontics

Most orthodontic and gnathological treatments focus on the teeth and their relationships. Unfortunately, function is often not one of the primary objectives. Starting with an examination of oral functions, we will analyze not only the local effects of malocclusions but also their systemic, postural, and neurological effects. From a global functional diagnosis, we will progress to the ontogenetic development of malocclusions and their subsequent therapy.

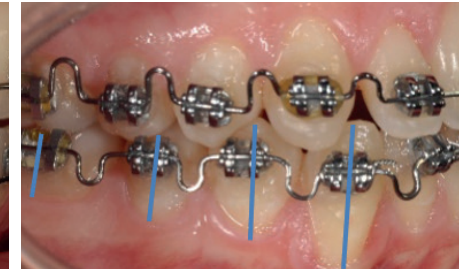
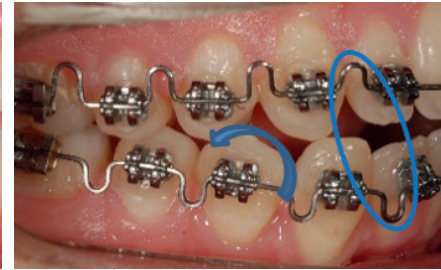
We will discuss gnathological and orthognathodontic therapy using Sato's multiloop technique, revisited and simplified with the use of a new high-performance wire, the GUMMETAL®. Together we will explore how this technique helps to conservatively treat severe dentoskeletal malocclusions without premolar extractions or surgical interventions. The rehabilitative concepts explained here have full application not only in adult orthodontic therapy but can also be applied to interceptive therapy and prosthetic rehabilitation. This provides a comprehensive system for evaluating the entire cervico-cranio-mandibular complex.



Theoretical Part

Course program Friday, October 17, 2025
(9 a.m. to 5 p.m.)

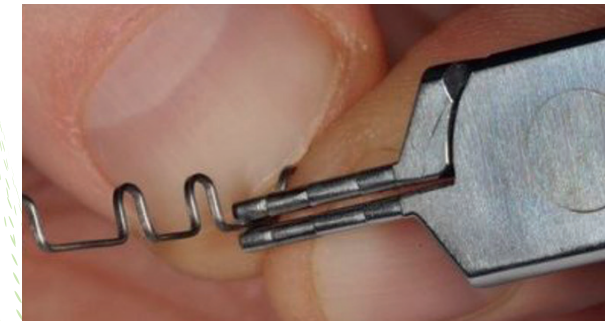
- The concept of function-driven orthodontics
- Orthodontic myths
- Orthodontics, gnathology, posturology, and neurology: separate areas or highly interconnected?
- The functions of the masticatory organ and the importance of functions from a local and systemic perspective
- Pathogenesis of malocclusion development
- Integrated functional diagnostics: from teeth to brain
- Basic concepts of orthognathodontic therapy
- From MEAW to GEAW: the evolution of Professor Sato's technique
- Steps for correct therapy:
 - Which brackets and why?
 - Simple alignment, strategic alignment, use of TADs
 - From MEAW to GEAW: characteristics of GUMMETAL
 - Loops: their purpose and how to create them
 - Elimination of interferences and use of repositioning bites
 - Mandibular repositioning and interarch elastics
 - Reconstruction of the occlusal plane
 - Achievement of a physiological occlusion
 - Retention
- Clinical cases of Class II, Class III malocclusions, and laterodeviations



Practical part

Course program Saturday, October 18, 2025
(9 a.m. to 1 p.m.)

- U-loops
- Construction of GEAW arch
- Activation of loops: step-up and step-down
- Wire activation: tip and torque
- Information for arches in Class I, Class II, Class III malocclusions and laterodeviations



Course language: English

