



New Orthodontic Data Services RMODS @ Bioprogressive.org

Dear RMODS Family

As our commitment to the continuation of the RMODS Data Services, RMO together with The Foundation of Modern Bioprogressive Orthodontics will resume its RMODS Data Services.

RMODS Data Services will be operating separately from RMO and will be managed by The Foundation of Modern Bioprogressive Orthodontics .

Services will be anticipated to resume in Beginning-Mid January 2021. Existing customers will also have the luxury to access the lectures, videos, books, publications related to Bioprogressive techniques and philosophy as well as its research database.

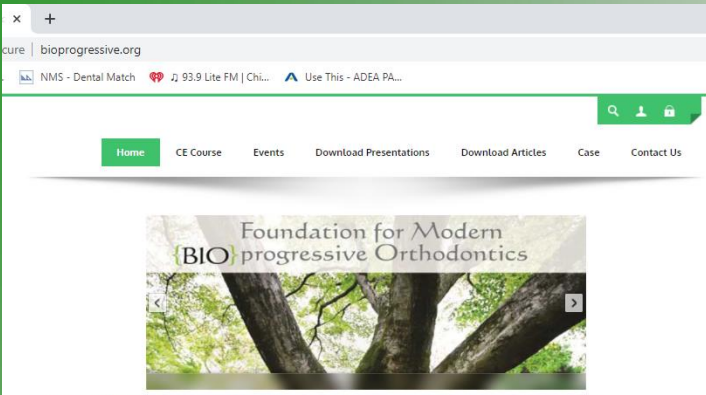
New access will be from www.bioprogressive.org/rmods

Stay tuned and stay well.

Wishing you all a Happy Holiday Seasons and Happy New Year 2021 (will be better for sure than 2020)

Dr. Pattie Dutton (pdutton@bioprogressive.org) / (RMODS@bioprogressive.org)

Foundation of Modern Bioprogressive Orthodontics © 2020

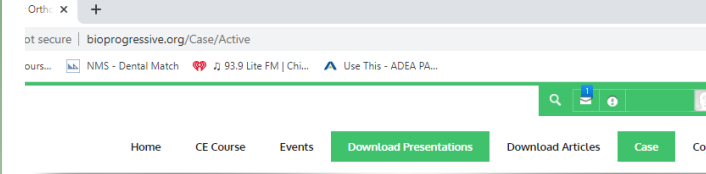


NEW!! JOINT CONTINUING EDUCATION PROGRAM WITH DEPT OF ORTHODONTICS U OF I CHICAGO

BIOPROGRESSIVE CONTINUING EDUCATION COURSE

A joint course between Foundation Of Modern Bioproggressive Orthodontics and Department Of Orthodontics University Of Illinois at Chicago.

Please click here to register : <http://ce.bioproggressive.org/Registration/> - OR- Scan code below

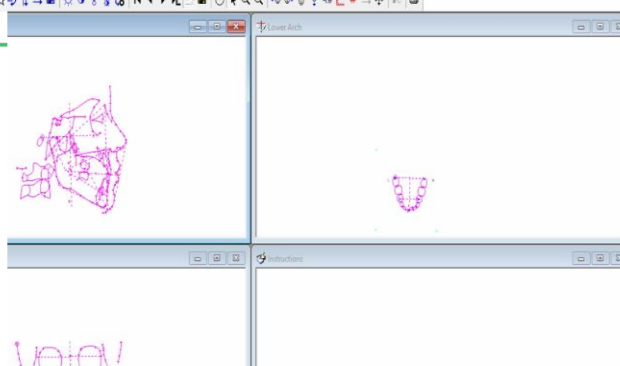


You are here: Case >> Active

Available Cases

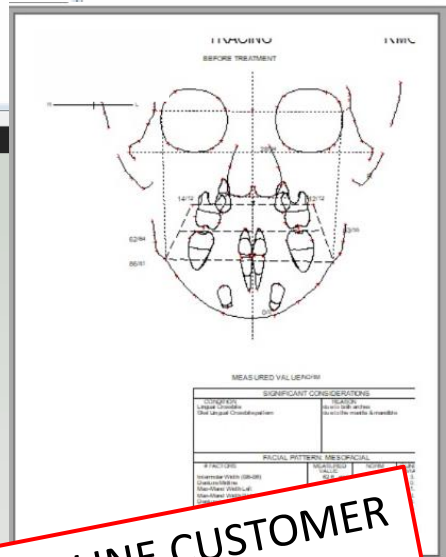
Filter Case

Case Group	Any...	Remark	Any...		
Race	Any...	Dentition	Any...	Skeletal Pattern	Any...
Skeletal	Any...	Molar Relation	Any...	Canine Relation	Any...
Crossbite	Any...	Extraction Upper	Any...	Extraction Lower	Any...
Bracket Prescription	Any...	Slot	Any...	Gender	Any...
Page		1	<input type="button" value="Show"/>		



Case: US1 0888 1800 1 | Doctor: SALMERI

Production Steps: Log 70 PX



NEW ONLINE CUSTOMER ORDER FORM WITH ADDED FEATURES

